



Ekonomická
fakulta
Faculty
of Economics

Jihočeská univerzita
v Českých Budějovicích
University of South Bohemia
in České Budějovice

Efficiently
Together

Doctoral study program





Ekonomická
fakulta
Faculty
of Economics

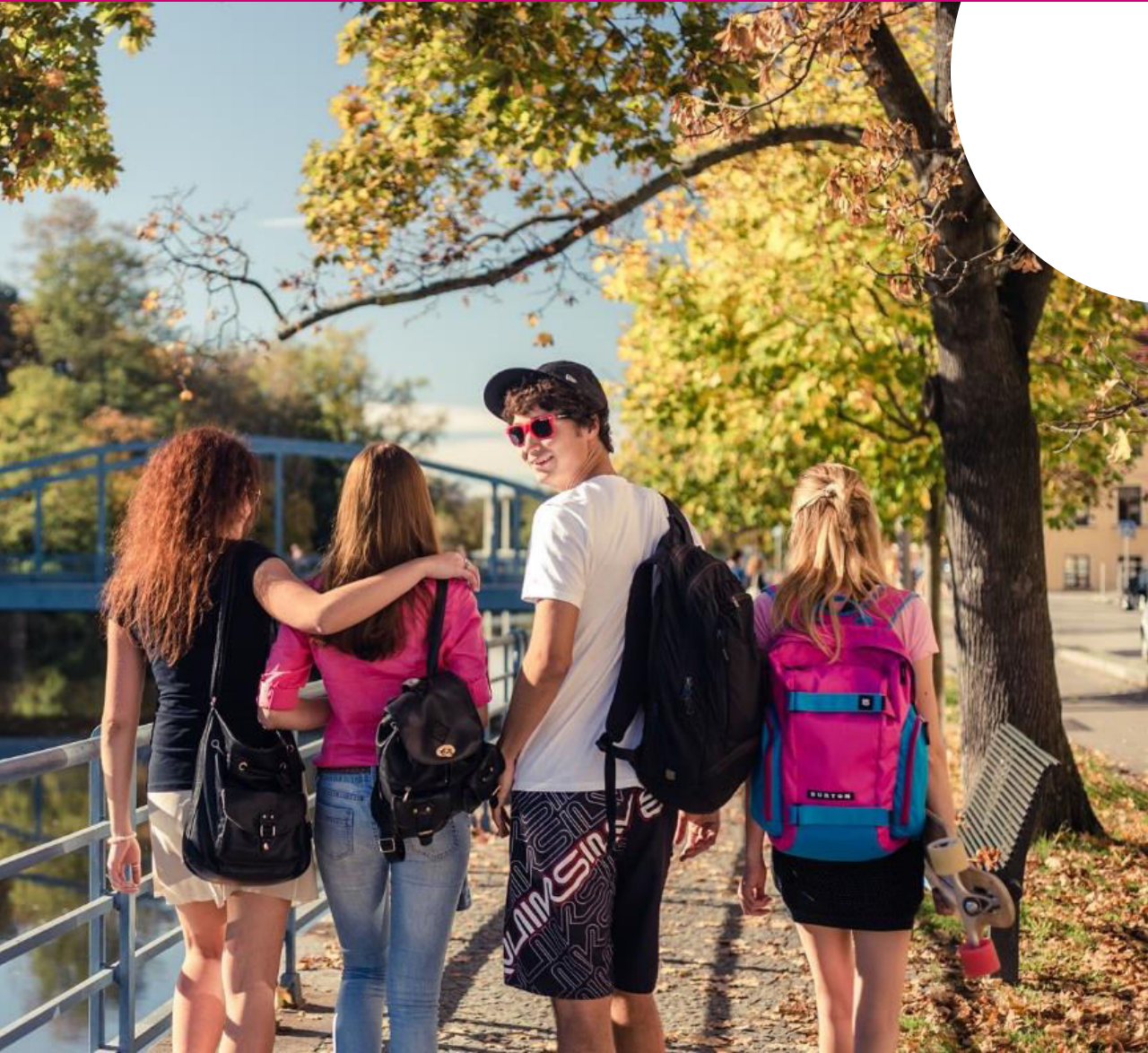
Jihočeská univerzita
v Českých Budějovicích
University of South Bohemia
in České Budějovice

Efficiently
Together



Advantages of studying with us

- Doctoral programme **Economics and Management**, study branch **Management and Business Economics** is implemented in the sense of § 47 of law No. 111/1998 of the Statute Book on universities.
- Due to a thorough theoretical study and research activities it prepares students for being involved in a **wide spectrum of branches of economic activities**, especially as highly qualified workers at higher levels of company management within both private and public sectors and also for further practice at positions of academic or science and research workers.



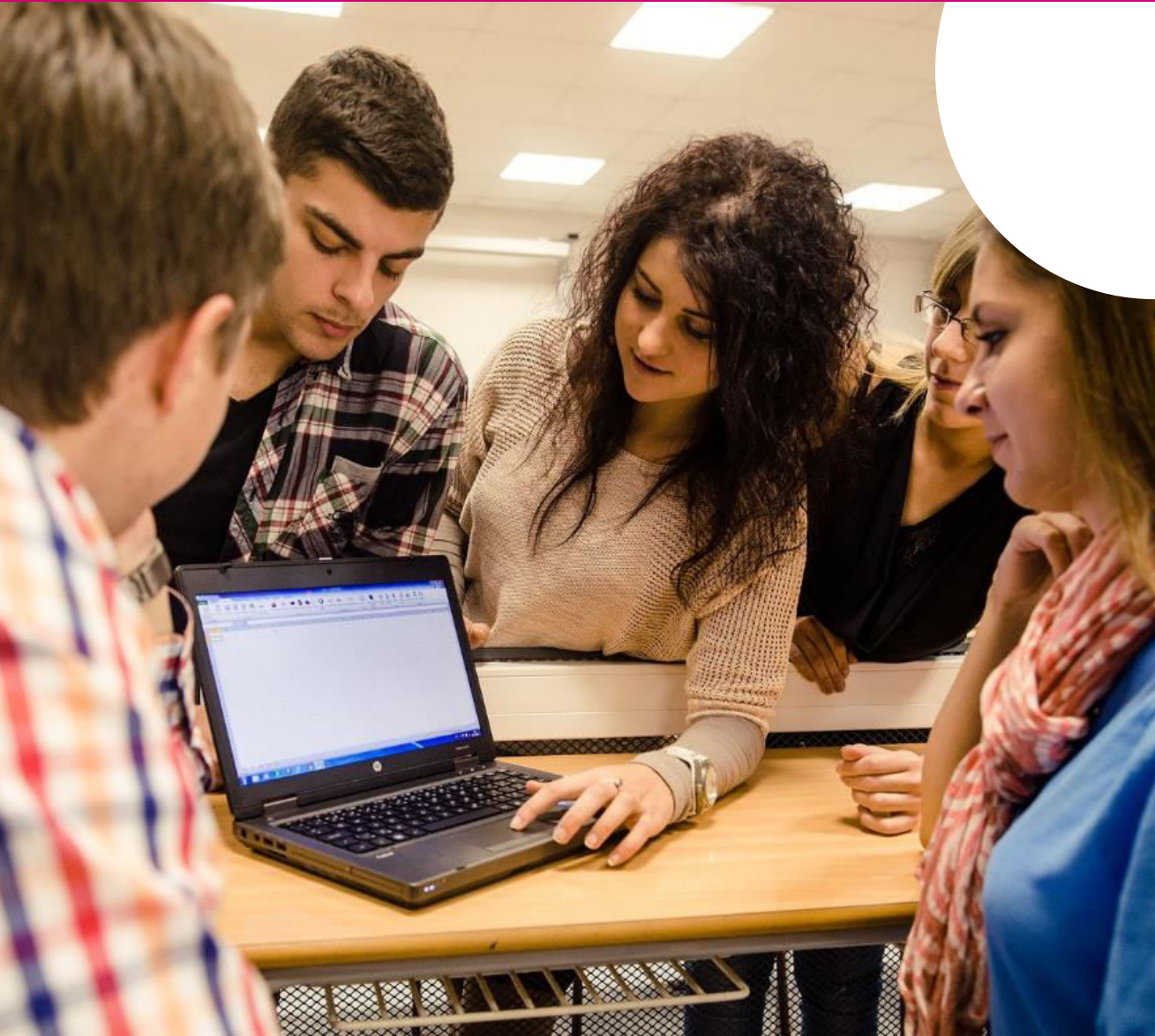
The aim of the doctoral study programme is:

- to mediate the students mastering of theoretical bases and acquiring methods of scientific work in the programme Economics and Management
- to develop student's ability of creative independent scientific work, especially via processing and defence of their dissertation thesis, publishing and presentation of scientific works.
- Graduates from the doctoral study programme will gain theoretical knowledge in the field of **management, economics, and financial management of enterprise, accounting and marketing**. A compulsory part of the study is **publishing and presentations of partial results of his/her own research**. We support especially presentations at foreign scientific conferences and participation in teaching at the FE USB or abroad.



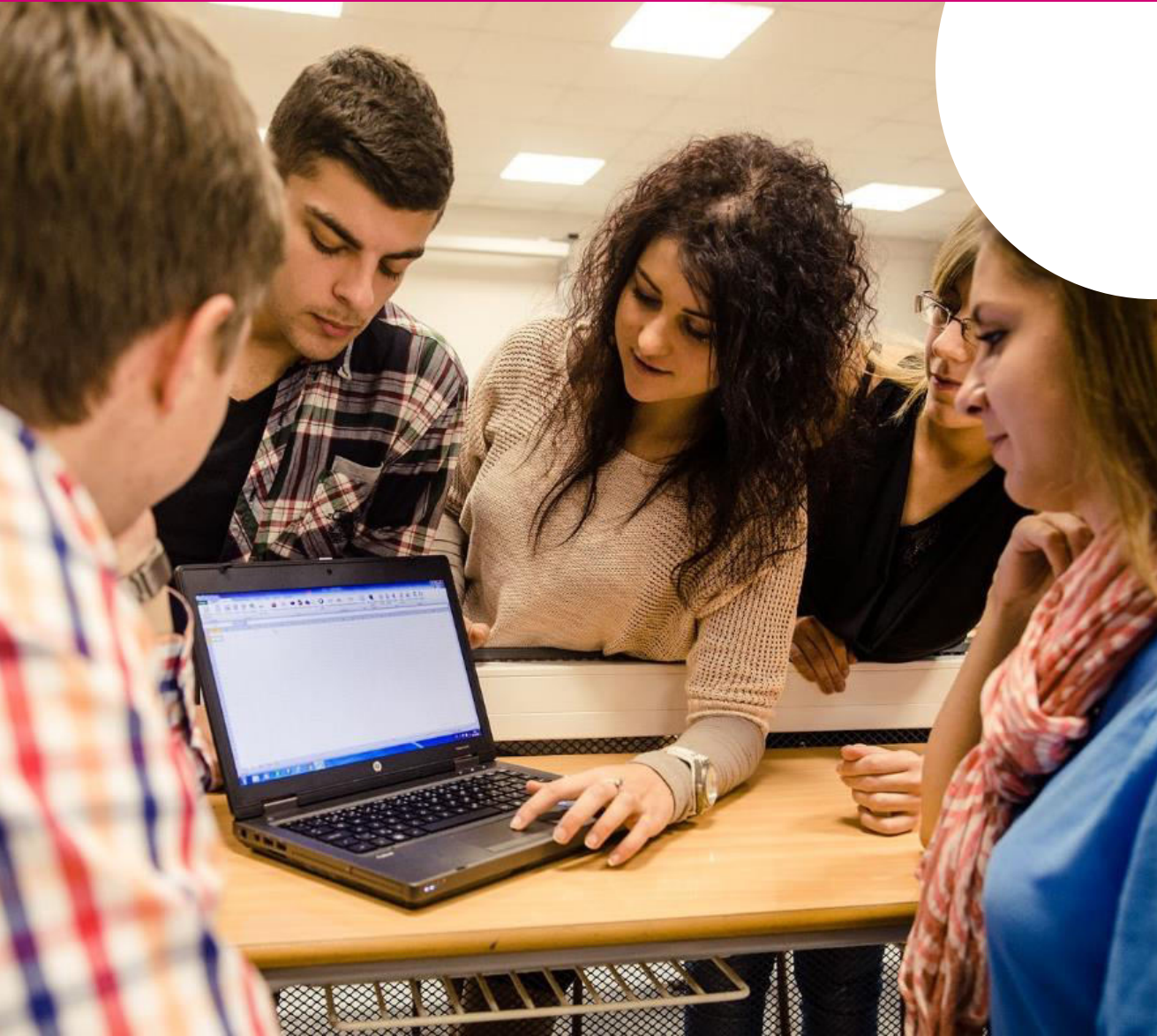
Doctoral studies – short history, great ambitions

- Standard study – 3 years
- Full-time and part-time study
- Cooperation with Universities abroad (Austria, USA, Hungary, Slovakia, France, Australia, ...)



Admission conditions:

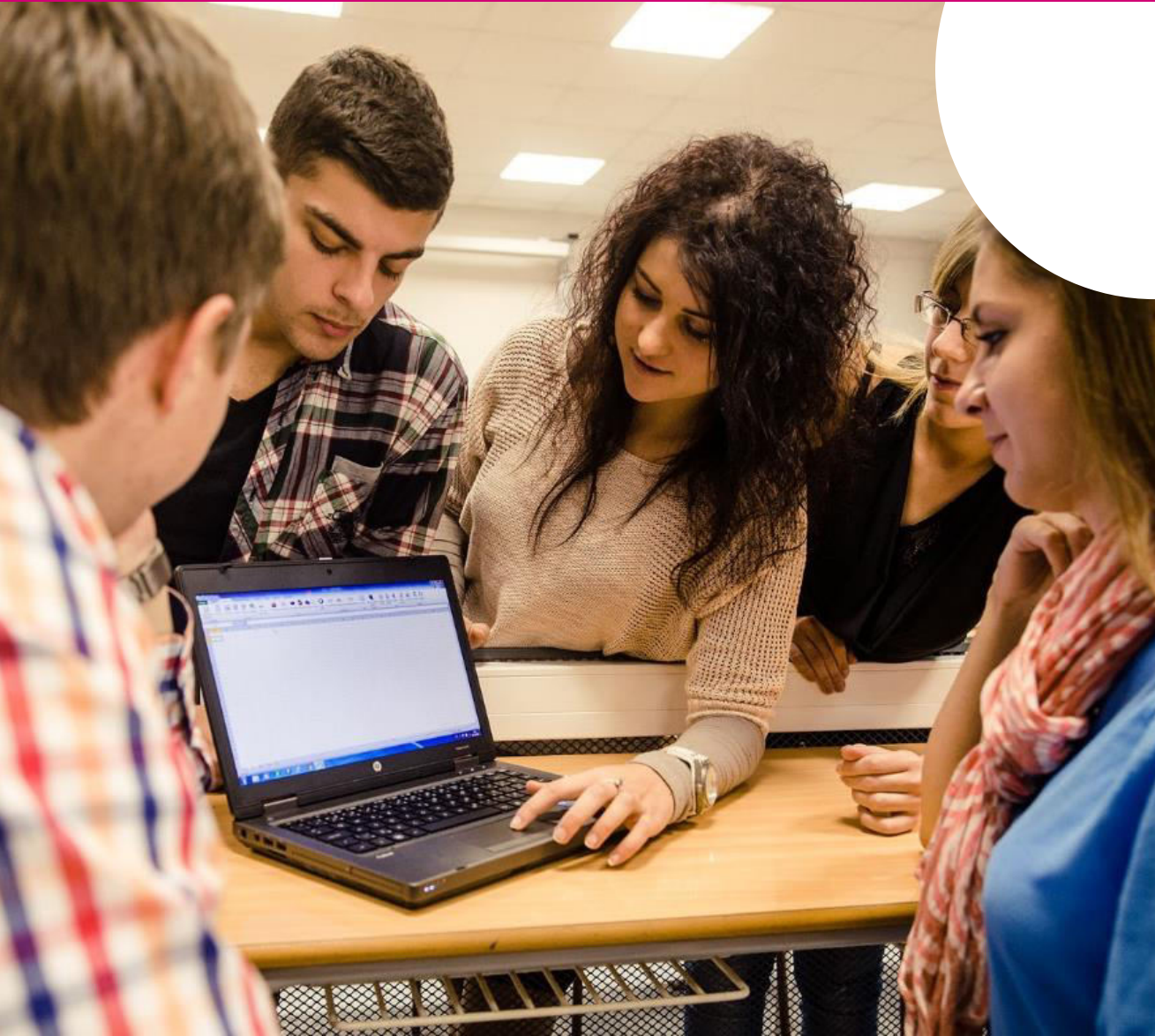
- Nostrified Master Degree diploma according to Law No. 111/1998 of the Statute book of universities;
- Structured professional CV (1 page);
- Overview of previous professional activities;
- Proof of application payment (Administration Fees 20EUR and Tuition Fee 3.300EUR per Academic year)



Entrance Examination:

The aim of the entry exam is to find out qualifications of the candidate for scientific research in the specific scientific field with the accent on:

- Knowledge of general and current problems in the scientific field
- Knowledge of the methodology of the scientific field
- Knowledge of the range of information within the chosen theme of the dissertation thesis
- Knowledge of professional English language



Garant of the study course:

ass. prof. Ladislav Rolínek, Ph.D.

Members of the Ph.D. board:

ass. prof. Ivana Faltová Leitmanová, Ph.D.

ass. prof. Ivana Boháčková, Ph.D.

ass. prof. Lubomír Gurčík, Ph.D.

ass. prof. Darja Holátová, Ph.D.

ass. prof. Jaroslava Holečková, Ph.D.

ass. prof. Milan Jílek, Ph.D.

ass. prof. Eva Cudlínová, Ph.D.

ass. prof. Ladislav Beránek, Ph.D.

ass. prof. Ing. Dagmar Škodová Parmová, Ph.D.

prof. Ing. Libor Grega, Ph.D.

ass. prof. Kamil Pícha, Ph.D.

ass. prof. Jindřiška Kouřilová, Ph.D.



Ekonomická
fakulta
Faculty
of Economics

Jihočeská univerzita
v Českých Budějovicích
University of South Bohemia
in České Budějovice

Efficiently
Together



Supervisors:

ass. prof. Darja Holátová, Ph.D.
ass. prof. Milan Jílek, Ph.D.
ass. prof. Jindřiška Kouřilová, Ph.D.
ass. prof. Ivana Faltová Leitmanová, Ph.D.
ass. prof. Ladislav Rolínek, Ph.D.
ass. prof. Dagmar Škodová Parmová, Ph.D.
ass. prof. Kamil Pícha, Ph.D.
ass. prof. Ladislav Beránek, Ph.D.
ass. prof. Petr Řehoř, Ph.D.
ass. prof. Tomáš Mrkvička, Ph.D.
ass. prof. Růžena Krninská, Ph.D.
ass. prof. Eva Cudlínová, Ph.D.



Ekonomická
fakulta
Faculty
of Economics

Jihočeská univerzita
v Českých Budějovicích
University of South Bohemia
in České Budějovice

Efficiently
Together



A - Compulsory Subjects:

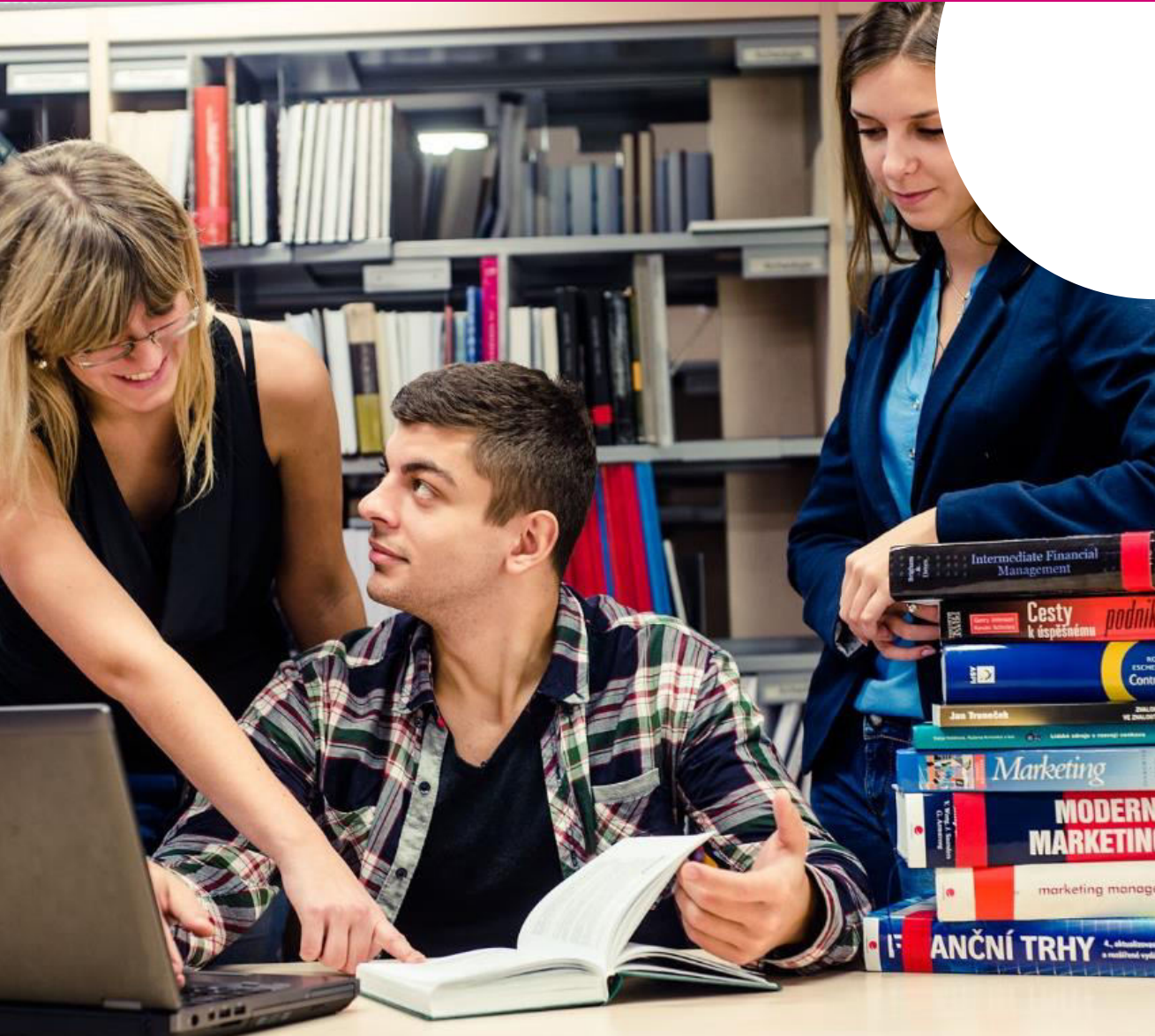
Economy
Quantitative Methods in Economy
Research Work Methodology
Financial Management of the Enterprise
Management Theory

B - Compulsory Optional Subjects:

Marketing
Accounting

C - Compulsory Research and Other Creative Activity:

Other specialized tasks
Articles in proceedings journals and monographs
Articles in reviewed scientific journals
Presentation at a national or international conference



Some examples of current topics:

- Application of green logistics in chosen enterprises
- Management of material and information flows in waste logistics in chosen enterprises
- Process models of enterprises participating in Fair Trade
- Management system for SMEs
- Soft Budget Constraint
- Investment and innovation potential of enterprises selected branches.
- Advantages and disadvantages of small and medium-sized businesses (SMEs) in the bio economy in the Czech Republic in comparison to traditional industrial enterprises
- Waste as a resource for Bio-Economy - mapping enterprises for processing of biowaste in selected EU countries



Ekonomická
fakulta
Faculty
of Economics

Jihočeská univerzita
v Českých Budějovicích
University of South Bohemia
in České Budějovice

Efficiently
Together

Doctoral study program

